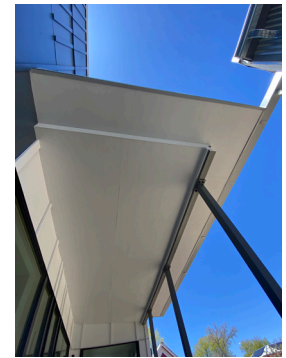


Mancos Commons

Mancos, CO



SITE & PROGRAM

This new mixed-use project for the expansion of the existing historic Mancos Press is nestled in a spectacular setting at the base of the La Plata mountains and Mesa Verde to the west. The expansion features new community art-making and active spaces with a street-facing community plaza, workshops, darkroom, office, retail space and three workforce housing units on the second floor. The project maintains a strong connection between indoor and outdoor areas, including the wildlife corridor adjacent to the Mancos River, a tributary of the Colorado River Watershed.

Constructive Form worked with the client group to create a flexible outdoor entry porch, to imagine a space that could be used to accommodate outdoor printing workshops for the Press, numerous Community events, and be an area of contemplation and respite for passersby. The structure is a hybrid construction of high-bay steel truss and wood framing with a slab on grade foundation and built to the 2021 Building and Energy code, exceeding the local energy code, using

Building Type: Mixed-Use

Project Type: Community

Project Scope: Full Contract (full architectural services; landscape architecture; permitting services)

Client: Mancos Common Press (nonprofit)

Size: 3,650 SF

Cost: \$2,000,000

Team: Geotech, Civil, Structural, Solar, Landscaping

Mancos Commons

Mancos, CO



all electric: air source heat pumps, solar ready roof and vehicle charging point.

The site plan anchors the transparent, daylit workshop, and enhances views through the building to all the exterior areas, with the belief that this constructed landscape is evocative of the native Four Corners landscape which can inspire, delight and become part of the artistic and creative process. We imagined the southern site area adjacent to the river to be a framework for growing native and dye plants used during printing press projects. Moreover, the area acts as a zone for directing and filtering run off and stormwater flow from the Plaza and the roof. Drought tolerance and ease of maintenance were the primary goals for the planting areas, as well as an invitation to the creatures from the meandering river corridor to access the site before heading back into the larger watershed.

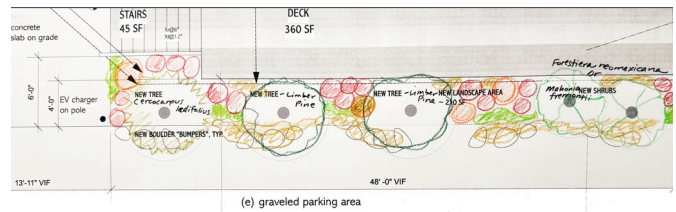
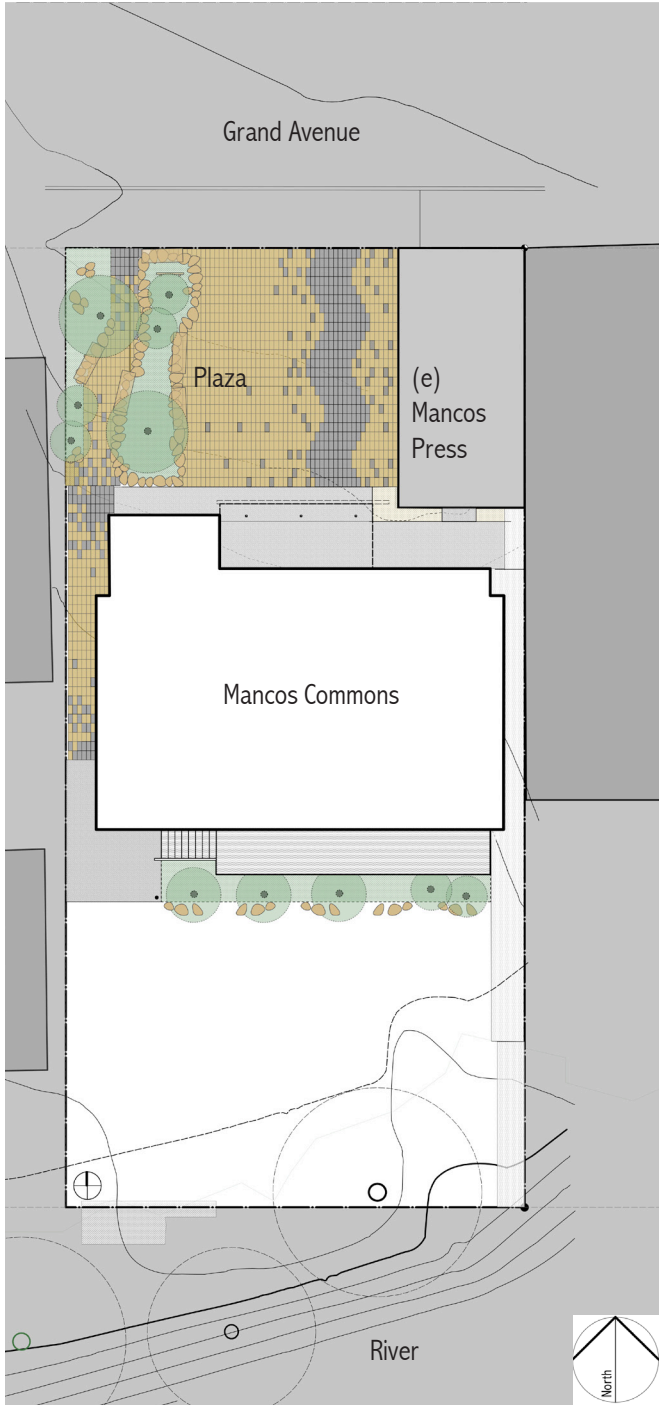


Constructive Form
Architecture and Design LLC

www.constructiveform.com

Mancos Commons

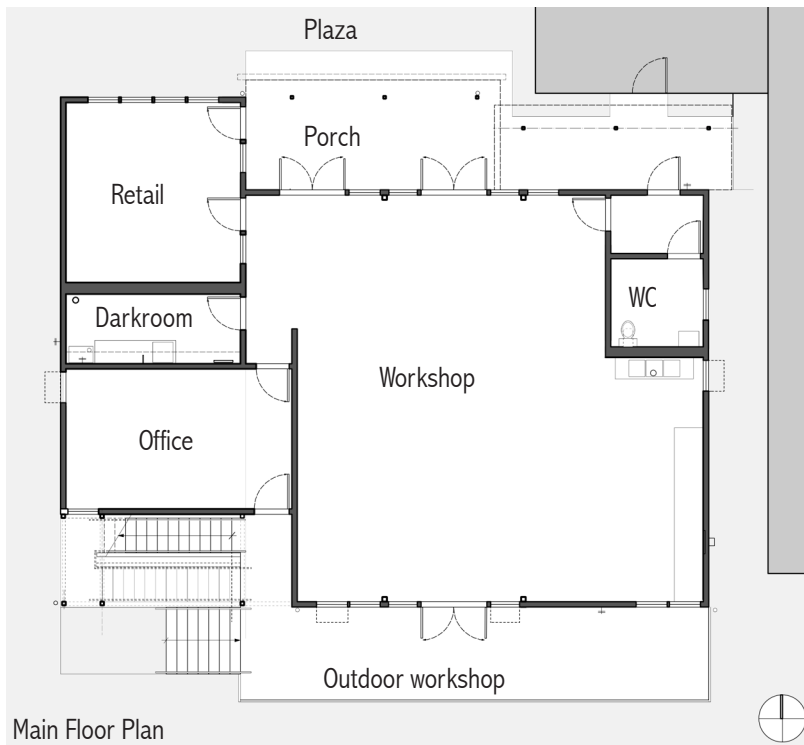
Mancos, CO



- (e) graveled parking area
- Cercocarpus ledifolius*
 - Pinus flexilis*
 - Forstiana neomexicana* or *Manissea fremontii*
 - larger shrub - 4 to 6 ft (evergreen if possible)
 - smaller shrub - 2 to 4 ft (evergreen if possible)
 - perennials - could be flowering (?) perennials or yucca/agave (depending on adjacent plants)
 - groundcover - consider whether sunny or shady/under canopy

Mancos Commons

Mancos, CO

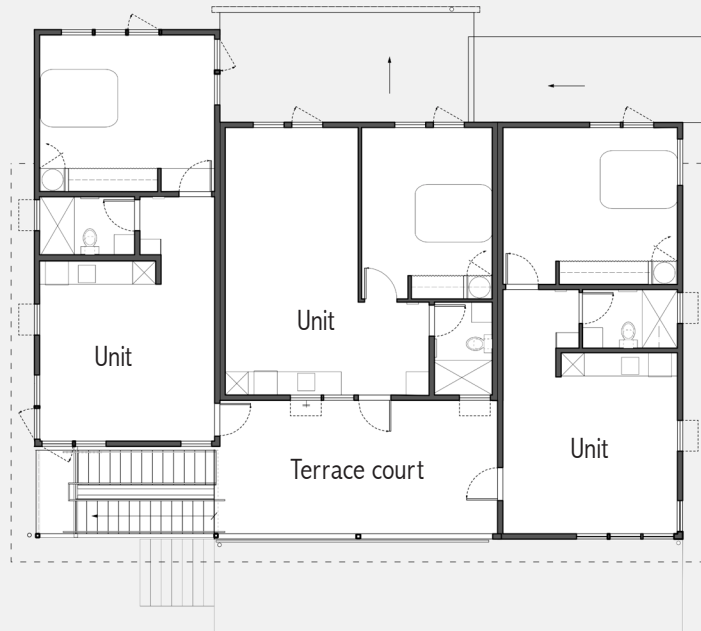


Main Floor Plan



Mancos Commons

Mancos, CO



Upper Floor Plan



Constructive Form
Architecture and Design LLC

www.constructiveform.com